

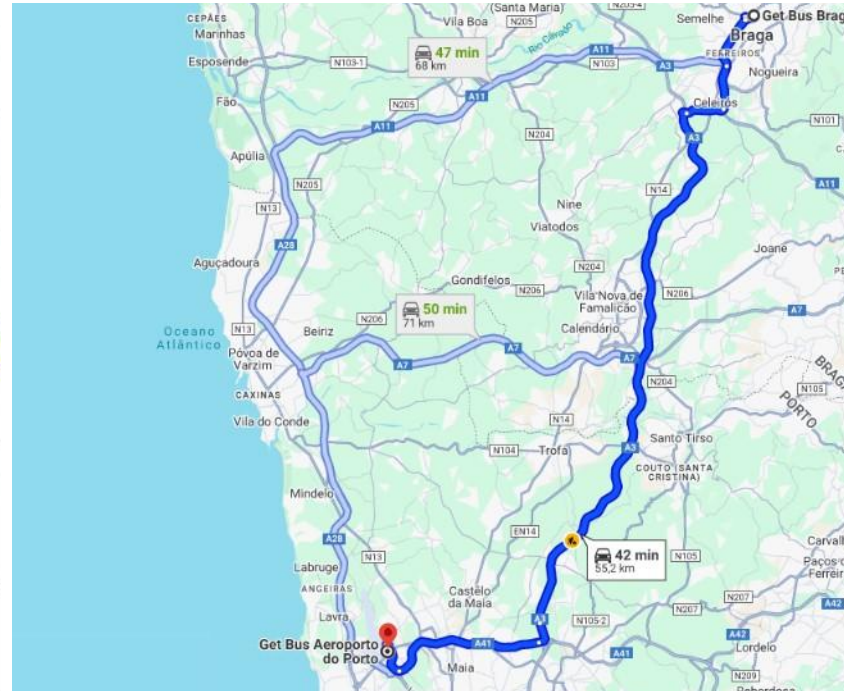
Itinerary | Option 1 | Public Transportation

Porto Airport - Braga Bus Terminal - Pousada Mosteiro Amares

Porto Airport – Get Bus Help Desk and Terminal

Avenida do Aeroporto 241, Maia

<https://maps.app.goo.gl/4jBKcd7tXJNSt9h57>



You can buy tickets either at the help desk at Porto airport or online one month before your arrival.

Here is the Get Bus website for more information and timetables between the airport and Braga Bus Terminal:

<https://www.getbus.eu/en/braga-porto-airport>

Estimated journey time:
50 minutes.

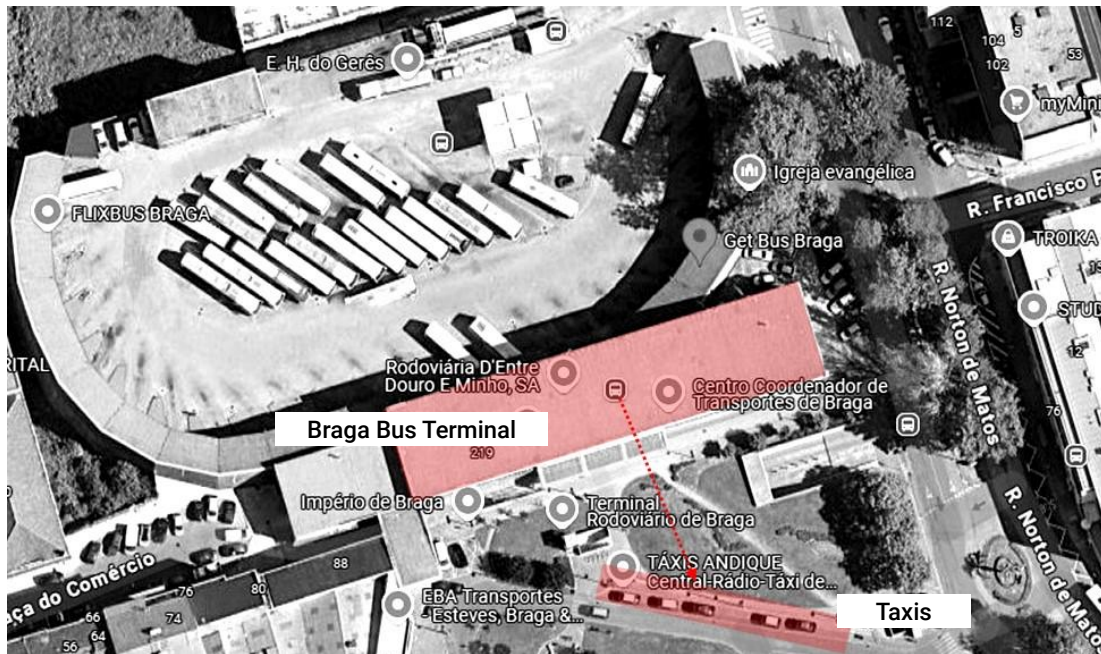
Itinerary | Option 1 | Public Transportation

Porto Airport - **Braga Bus Terminal** - Pousada Mosteiro Amares

Get Bus Braga – Braga Bus Terminal

Avenida General Norton de Matos 110, Braga

<https://maps.app.goo.gl/xADbk24ZehmnPLV7>



You can take a taxi in the square in front of the bus terminal, in Braga.

If you wish to book a taxi in advance, you can contact TAXIS ANDIQUE by e-mail at geral.taxisandique@gmail.com or by telephone on +351 253 253 535.

Estimated journey time: **40 minutes**.

Itinerary | Option 1 | Public Transportation

Porto Airport - Braga Bus Terminal - Pousada Mosteiro Amares

Pousada Mosteiro Amares

Largo do Terreiro, Mosteiro de Santa Maria do Bouro

<https://maps.app.goo.gl/F7PLp9y9kFXrGFd56>

Get a ride

Get Bus Braga

Pousada Mosteiro Amares

Pickup now

For me

Choose a ride

Recommended



UberX Saver 4

1 min away • 14-12
A new trip option with lower fares

€28.46



Green 4

1 min away • 14-13
Emission-free, affordable, everyday rides

€31.95



UberXL 6

1 min away • 14-12
Affordable rides for groups up to 6

€50.74

Popular



UberX 4

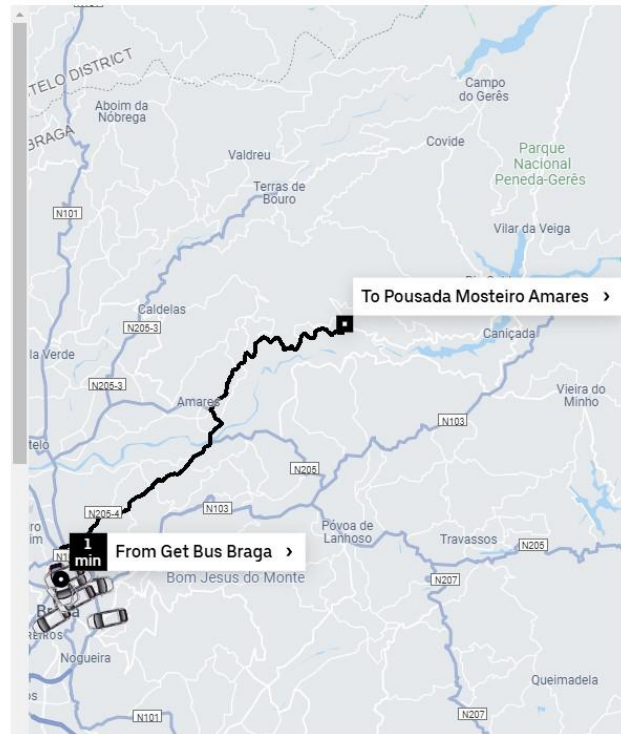
1 min away • 14-12
Affordable, everyday rides

€31.95

This is an estimate only.

Prices vary depending on the time of day, availability and day of the week.

Estimated journey time: **40 minutes.**



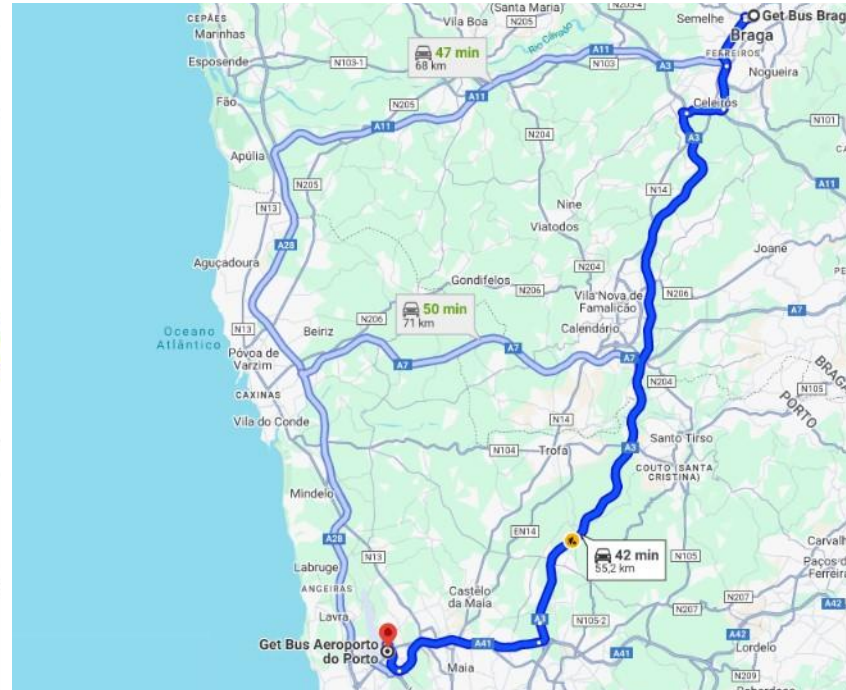
Itinerary | Option 1 | Public Transportation

Porto Airport - Braga Bus Terminal - Pousada Caniçada - Gerês

Porto Airport – Get Bus Help Desk and Terminal

Avenida do Aeroporto 241, Maia

<https://maps.app.goo.gl/4jBKcd7tXJNSt9h57>



You can buy tickets either at the help desk at Porto airport or online one month before your arrival.

Here is the Get Bus website for more information and timetables between the airport and Braga Bus Terminal:

<https://www.getbus.eu/en/braga-porto-airport>

Estimated journey time:
50 minutes.

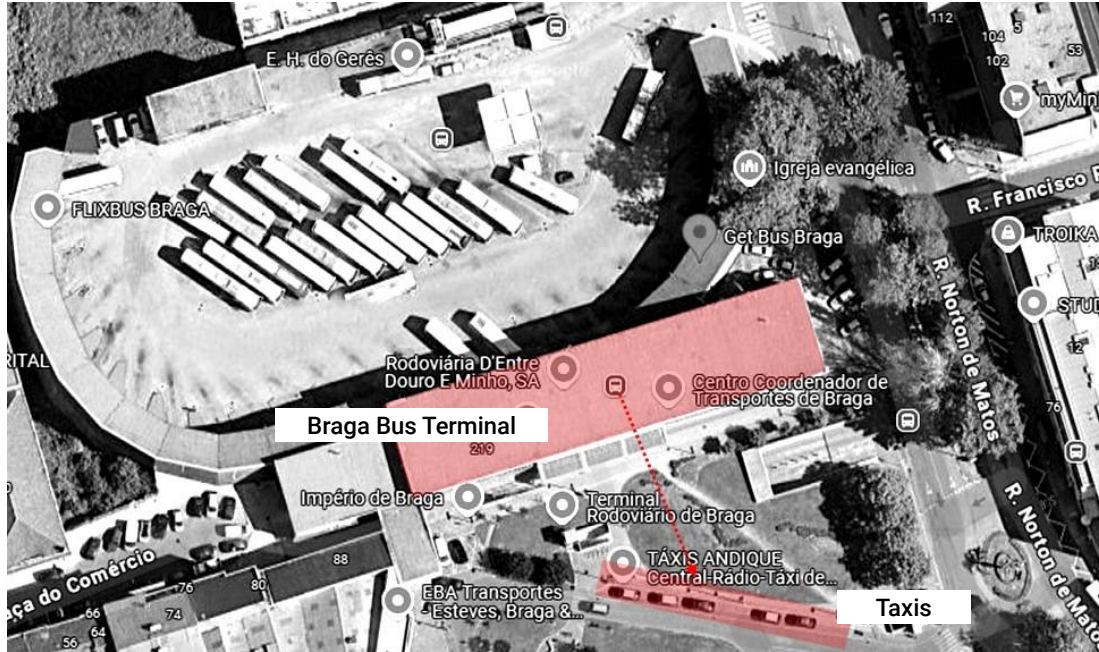
Itinerary | Option 1 | Public Transportation

Porto Airport - Braga Bus Terminal - Pousada Caniçada - Gerês

Get Bus Braga – Braga Bus Terminal

Avenida General Norton de Matos 110, Braga

<https://maps.app.goo.gl/xADbk24ZehmnPLV7>



Uber **does not go** to Pousada Caniçada - Gerês. You have to take a taxi in the square in front of the bus terminal, in Braga.

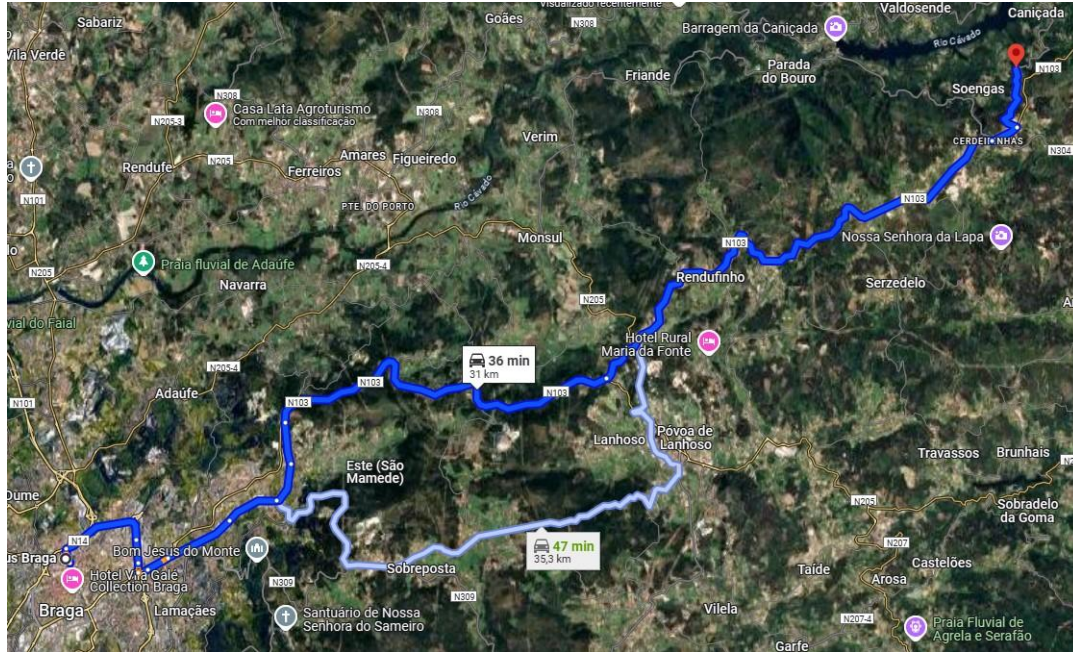
Itinerary | Option 1 | Public Transportation

Porto Airport - Braga Bus Terminal - Pousada Caniçada - Gerês

Pousada Caniçada – Gerês

Avenida da Caniçada 1518, Caniçada – Gerês

<https://maps.app.goo.gl/2uwEfHVfsPxtfWOYA>



If you wish to book a taxi in advance, you can contact TAXIS ANDIQUE by email at geral.taxisandique@gmail.com or by telephone on +351 253 253 535.

Estimated journey time: **50-60 minutes.**

Itinerary | Option 2 | Car Rental

Record go Mobility - Porto

Rua do Barreiro 403, Moreira

<https://maps.app.goo.gl/AVSioBPDBEw4fWr29>

Once you arrive in Porto, if you want more flexibility in your travel plans, you may want to consider a car rental service. From our search, **Record Go Mobility** seems to be a good option with the best conditions. Here is a link to their offers for the following period (21 March - 31 March): <https://www.recordrentacar.com/en/offers-car-hire-porto-airport/> They offer a shuttle bus to take you to their office, which is outside the airport building.

Porto Airport - Pousada Caniçada - Gerês

Record^{go}
MOBILITY

Shuttle bus: +351 910 655 369

AIRPORT

PORTO

1

Ao chegar ao terminal de chegadas do aeroporto, deverá sair à sua direita em direção ao ponto de encontro, situado no exterior do terminal.

When you arrive at the airport arrivals terminal, you should turn right towards the meeting point outside the terminal.



2

Sair do terminal pela saída situada atrás da loja Relay.
Exit the terminal through the exit located behind the Relay store.



3

Uma vez fora do terminal, encontrará à sua esquerda, uma passadeira pedonal para atravessar a faixa de rodagem em direção ao passeio central.

Once outside the terminal, you will find a pedestrian crossing on your left to cross the carriageway towards the central promenade.



4

Uma vez no passeio do meio, encontrará à sua direita uma placa informativa do aeroporto. Nessa zona de estacionamento, verá a nossa shuttle de cortesia, um serviço gratuito, que o levará aos nossos escritórios em menos de 10 minutos.


Once on the middle pavement, you'll find an airport information sign on your right. In this car park area, you'll see our courtesy shuttle, a free service that will take you to our offices in less than 10 minutes.



Pousada Caniçada – Gerês

Avenida da Caniçada 1518, Caniçada – Gerês

<https://maps.app.goo.gl/2uwEfHVfsPxtfWQYA>



Francisco Sá Carneiro Airpo... > Pousada Caniçada...

1 h 15 min 82.4 km € 15.54 15 kg CO₂ Edit

discover On the way Instructions Cost Expense note

Total cost of the trip

€15.54

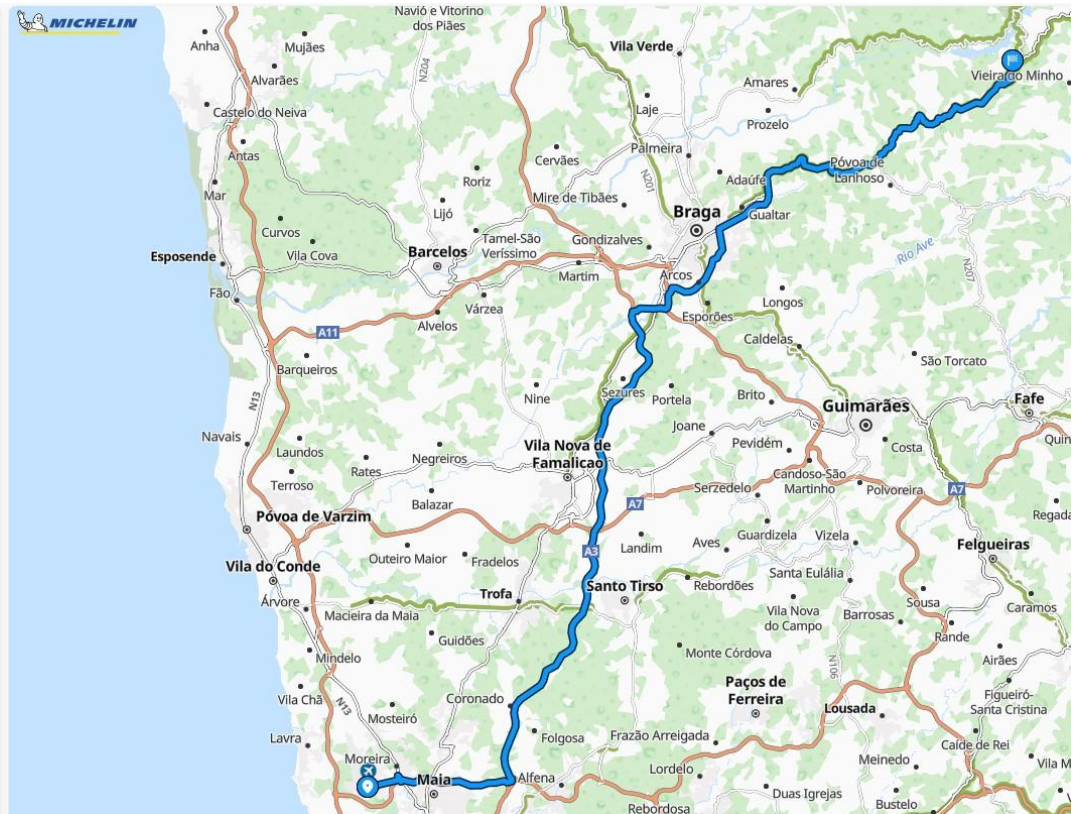
Cost estimated for Clio V - Gasoline Edit

Cost details

 Fuel	€11.49
 Tolls	€4.05

Tolls list

N13 - Moreira	€0.1
N14 - Maia	€0.25
Braga Sul	€3.7



Itinerary | Option 2 | Car Rental

Record go Mobility - Porto

Rua do Barreiro 403, Moreira

<https://maps.app.goo.gl/AVSioBPDBEw4fWr29>

Once you arrive in Porto, if you want more flexibility in your travel plans, you may want to consider a car rental service. From our search, **Record Go Mobility** seems to be a good option with the best conditions. Here is a link to their offers for the following period (21 March - 31 March): <https://www.recordrentacar.com/en/offers-car-hire-porto-airport/>
They offer a shuttle bus to take you to their office, which is outside the airport building.

Porto Airport - Pousada Mosteiro Amarelo

Record^{go}
MOBILITY

Shuttle bus: +351 910 655 369

AIRPORT

PORTO

1

Ao chegar ao terminal de chegadas do aeroporto, deverá sair à sua direita em direção ao ponto de encontro, situado no exterior do terminal.

When you arrive at the airport arrivals terminal, you should turn right towards the meeting point outside the terminal.



2

Sair do terminal pela saída situada atrás da loja Relay.
Exit the terminal through the exit located behind the Relay store.



3

Uma vez fora do terminal, encontrará à sua esquerda, uma passadeira pedonal para atravessar a faixa de rodagem em direção ao passeio central.

Once outside the terminal, you will find a pedestrian crossing on your left to cross the carriageway towards the central promenade.



4

Uma vez no passeio do meio, encontrará à sua direita uma placa informativa do aeroporto. Nessa zona de estacionamento, verá a nossa shuttle de cortesia, um serviço gratuito, que o levará aos nossos escritórios em menos de 10 minutos.

Once on the middle pavement, you'll find an airport information sign on your right. In this car park area, you'll see our courtesy shuttle, a free service that will take you to our offices in less than 10 minutes.



Pousada Mosteiro Amares

Largo do Terreiro, Mosteiro de Santa Maria do Bouro

<https://maps.app.goo.gl/F7PLp9y9kFXrGFd56>



Francisco Sá Carneiro Airport, ... > Pousada Mosteir...
 1 h 15 min 77.2 km € 14.85 14 kg CO₂ Edit

To discover On the way Instructions Cost Expense n...

Total cost of the trip

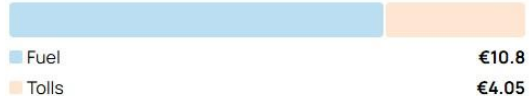
€14.85

Cost estimated for

Clio V - Gasoline

Edit

Cost details



Tolls list

N13 - Moreira	€0.1
N14 - Maia	€0.25
Braga Sul	€3.7

